



Life is  
Better  
Outside

# CARPORT | PERGOLA | CABANA

2024 COLLECTION





## **Redefining Outdoor Living Standards.**

Azenco Outdoor invites you to explore the potential of your outdoor spaces. Transform any outside space into a unique architectural masterpiece as all of our projects are tailored to the most creative outdoor ambitions. Our pergola collections combine **European quality made in America** — crafted for elegance and functionality.



The roots of Azenco Outdoor trace back to 1996 when Charles Chapus founded Abrisud, the European leader in pool enclosures. This marked the beginning of a journey that would redefine outdoor living. In 2011, he created Azenco Groupe France before expanding to Spain in 2016. With 30 patents and 25 years of expertise in the aluminum industry, Charles founded Azenco Outdoor in 2017 in the Sunshine State of Florida.

He imagines the elegant designs that define our brand. His hands-on approach extends to overseeing every aspect of the production operations, ensuring that his ideas come to life with seamless installation process and unparalleled craftsmanship.

“Because life is better outside, we design and manufacture innovative products to enhance outdoor living experiences.”

Charles Chapus - CEO

Vice President Leslie Chapus leads Azenco Outdoor’s global expansion and operational strategy. With a keen focus on orchestrating national operations, Leslie connects the dots between the distribution network, material suppliers, sales, and marketing teams. Her leadership ensures that Azenco Outdoor remains at the forefront of the outdoor living industry.

Azenco Outdoor’s commitment goes beyond products; it extends to the customer experience. Our team of dedicated local dealers provides you with the best possible assistance, ensuring that you can enjoy your elegant outdoor space with peace of mind. Behind the scenes, we take care of every detail so that you can, not only see, but experience the Azenco Outdoor difference.





# BETTER DESIGN

Our pergola collections go beyond being simple aluminum structures; their **superior design** serve as a flawless addition to complement and enhance any architectural style.

Our products provide **unmatched spans**, delivering a sense of openness and elegance to your outdoor space. The **absence of visible fasteners** contributes to a clean and seamless aesthetic, allowing the charm of the design to take center stage. We understand that the finer details matter, and that's why we have integrated a **hidden drainage system** into our products, ensuring that both form and function are seamlessly combined.

**Everything we create is custom**, reflecting our dedication to crafting designs that effortlessly blend with your landscape. Our goal is to provide you with an architectural feature that not only enhances the beauty of your outdoors but also protects your guests, furniture, and cherished outdoor moments from the unpredictable elements.







# BETTER QUALITY



We take pride in consolidating durability with innovative features, ensuring that **your investment stands the test of time**. Our team has spent years studying to develop an outdoor cover collection that is not only beautiful but also highly functional & sustainable. The key to achieving this balance lies in the selection of the best materials available; **we only use aluminum** without contaminants for enhanced strength.

We have examined every aspect of our production process, ensuring only the **highest quality products** leave our factory. To streamline the construction process, our engineers employ best-in-class machining processes, cutting, and pre-drilling our products with precision.

Recognizing the importance of every element, from the frame to the louvers, each piece is carefully **powder-coated** with our standard color palette or the color of your choice. This not only adds a beautiful finish to our products but also **ensures reliable quality**.





# BETTER EXPERIENCE

At the heart of our commitment to an **unparalleled experience** is the belief that the unseen elements are just as crucial as the visible ones.

We take pride in the meticulous orchestration of every detail behind the scenes, making sure that you can successfully realize your outdoor project with **complete peace of mind**. Whether you envision the cover for a backyard haven, a vibrant restaurant patio, or an inviting hotel retreat, our state-of-the-art manufacturing process guarantees the **best lead time** on the market.

What sets us apart is our commitment to efficiency, ensuring that your outdoor space comes to life in the shortest time frame possible. While Azenco Outdoor takes care of the manufacturing, our local dealers specialize in the installation of our tailor-made products.

This collaborative effort ensures a **streamlined journey**, from the initial concept to the final installation, emphasizing our dedication to delivering not just a product but an exceptional experience.







OUR PERGOLA COLLECTIONS

**R-BLADE™**

LOUVERED ROOF PERGOLA

**R-SHADE™**

INSULATED ROOF PERGOLA

**R-CAR™**

LUXURY CARPORT

**R-BREEZE™**

FIXED LOUVERED PERGOLA

**K-BANA™**

MANUAL LOUVERED PERGOLA





**R-BLADE™**

The weather changes, not your outdoor experience.



# R-BLADE™

## — Louvered Roof Pergola

Introducing R-BLADE™ by Azenco Outdoor — a top-tier solution providing a **unique outdoor experience**, come rain or shine.

The standout attribute of this versatile and customizable pergola is its **motorized adjustable louvers**, giving precise control over sunlight. Whether you seek the comforting warmth of the sun or require protection for yourself, your guests, or your furniture, R-BLADE™ adapts to your needs.

Take it a step further by adding lights, fans, heaters, screens or any of our compatible features for year-round enjoyment. Stay cool in the summer, cozy in the winter, and bug-free at all times.

**Control every feature** at the touch of a button, with a dedicated app, with your virtual assistant or opt for an **autonomous pergola** thanks to our smart weather sensors.

R-BLADE™ is the **perfect blend of luxury and functionality**, redefining your outdoor living space and experience. Forget about weather-related disruptions to your plans. Instead, enjoy a versatile space that adapts to your needs.

22'10" x 15' largest single zone

6.5" x 6.5" - 8" x 8" posts

Built-in Gutter System

Snow Load Capacity - Up to 100 lbs/sq. ft.

Wind Load Capacity - Up to 190 mph







### Configuration

- Free-standing / Wall-mounted
- Multi-zone Layouts
- Custom Designs
- Special Cuts

### Integrated Lighting

- RGBW LED Strips
- LED Ramps
- Recessed Lights

### Architectural Features

- Cornice
- Corbels
- Accessory Beams
- Privacy Walls
- Base Plate Covers

### Automation

- Remote & App Control
- Wind Sensor
- Rain Sensor
- Temperature Sensor
- Photocell Sensor

### Compatible Features

- Screens
- Fans
- Heaters
- Speakers
- Misting System

### Color Palette

AKZONOBEL – AAMA 2604

- white
- black
- gray/bronze
- wood-grain
- custom color



# R-SHADE™

A weatherproof outdoor all year long.







# R-SHADE™

## — Insulated Roof Pergola

Experience **ultimate weather protection** with R-SHADE™ by Azenco Outdoor. Say farewell to weather constraints as our insulated roof pergola offers maximum comfort in case of rain, snow, cold or heat.

Integrating an **insulated roof** with the identical frame as R-BLADE™, our structure seamlessly integrates with the elements of your outdoor space and architectural features. Customize your R-SHADE™ according to your preferences, from selecting roof colors to incorporating **optional accessories** like accent lighting, fans, heaters, and screens, all contributing to the creation of your perfect ambiance.

Whether you're hosting gatherings, relaxing, or working outdoors, our insulated roof collection allows you to enjoy your outdoor space **regardless of the weather**.

Redefine your outdoor lifestyle with R-SHADE™ by Azenco Outdoor. Experience comfort, style, and flexibility, making your outdoor space truly yours **365 days a year**.

22'10" x 22'10" largest single zone

6.5" x 6.5" - 8" x 8" posts

Built-in Gutter System

Snow Load Capacity - Up to 80 lbs/sq. ft.

Wind Load Capacity - Up to 175 mph



## Configuration

Free-standing / Wall-mounted  
Multi-zone Layouts  
Custom Designs  
Special Cuts

## Integrated Lighting

RGBW LED Strips  
LED Ramps  
Recessed Lights

## Architectural Features

Cornice  
Corbels  
Accessory Beams  
Privacy Walls  
Base Plate Covers

## Automation

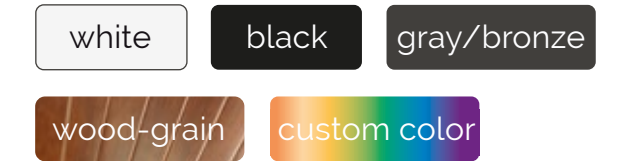
Remote Control  
App Control  
Photocell Sensor

## Compatible Features

Screens  
Fans  
Heaters  
Speakers  
Misting System

## Color Palette

AKZONOBEL – AAMA 2604





R-CAR™

Sophisticated cover for your vehicles.





# R-CAR™

## — Luxury Carport

Protect your vehicle from the elements with our tailored carport. The innovative R-CAR™ let you experience the convenience of driving into a carport boasting the **same benefits as our pergolas** – a sophisticated design that effortlessly complements any architectural style.

Whether it's rain, snow, or intense sunlight causing wear and tear on your vehicle, our carport provides a **reliable solution**. The extended pillars not only alleviate concerns about accommodating multiple vehicles or even a boat but also provide a robust cover for shielding your **valuable assets**.

Tailored to your preferences, our carports can be integrated into your existing structure or installed as freestanding, drive-through shelter. Choose the perfect color to harmonize with your house or restaurant, from the frame to the roof. Take it a step further by incorporating solar panels to generate environmentally friendly power for your electric vehicle, ensuring a sustainable and eco-friendly solution.

Elevate the aesthetics of your home or commercial setting by investing in a carport that seamlessly **integrates with its surroundings**.

22'10" x 22'10" largest single zone

6.5" x 6.5" - 8" x 8" posts

Built-in Gutter System

Snow Load Capacity - Up to 80 lbs/sq. ft.

Wind Load Capacity - Up to 175 mph







## Configuration

Free-standing / Wall-mounted  
Multi-zone Layouts  
Custom Designs  
Special Cuts

## Integrated Lighting

RGBW LED Strips  
LED Ramps  
Recessed Lights

## Architectural Features

Cornice  
Corbels  
Accessory Beams  
Privacy Walls  
Base Plate Covers

## Automation

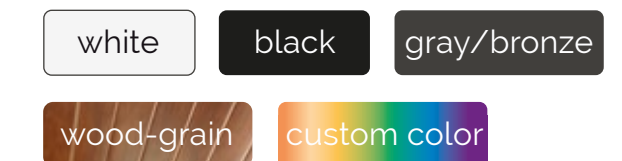
Remote Control  
App Control  
Photocell Sensor

## Compatible Features

Screens  
Fans  
Heaters  
Speakers  
Misting System

## Color Palette

AKZONOBEL – AAMA 2604







**R-BREEZE™**

Partial shade shaping outdoor spaces.





# R-BREEZE™

## — Fixed Louvered Pergola

R-BREEZE™ redefines outdoor living by prioritizing **partial shade** while seamlessly enhancing the **visual appeal** of any space.

Designed to create a delicate interplay of light and shadow, the structure becomes a **sculptural element**. Its lattice design provides just the right amount of shade while maintaining an open and airy feel—a perfect balance of form and function. Effectively **delimiting areas** for any exterior space, it adds a new dimension creating distinct volumes and defining the character of each outdoor zone.

Crafted with precision, this pergola merges **modern lines with timeless elegance** providing a permanent architectural imprint on your space. R-BREEZE™ adapts seamlessly to diverse settings, whether traditional or contemporary, creating an atmosphere of refined sophistication.

As the sun sets, the R-BREEZE™ continues to captivate. The option to integrate lights within the lattice extends its charm into the evening. It becomes a **statement of architectural beauty** in your outdoor space not only providing spatial definition but also an enchanting ambiance.

22'10" x 22'10" largest single zone

6.5" x 6.5" or 8" x 8" posts

6.5" x 6" frame

Angled Slat option - 5.5" x 1" at a 55° angle

Fixed Slat option - 5" x 1.5"





## Configuration

Free-standing / Wall-mounted  
 Multi-zone Layouts  
 Custom Designs  
 Special Cuts

## Automation

Remote Control  
 App Control  
 Photocell Sensor

## Integrated Lighting

LED Ramps  
 Recessed Lights

## Compatible Features

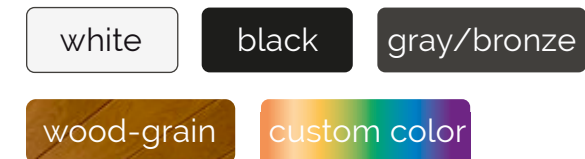
Screens  
 Fans  
 Heaters  
 Speakers  
 Misting System

## Architectural Features

Accessory Beams  
 Privacy Walls  
 Base Plate Covers

## Color Palette

AKZONOBEL – AAMA 2604







**K-BANA™**

A private space in the open-air.



# K-BANA™

## — Manual Louvered Pergola

K-BANA™ by Azenco Outdoor, a four-time **award-winning** manual louvered pergola. This clever structure redefines **intimate accommodations**. Its ingenious engineering integrates a gutter system and a manually operable roof giving **control over sunlight and privacy**.

Manufactured from high-quality aluminum, it combines elegant design with impeccable craftsmanship. This structure brings sophistication and style to any outdoor environment whether it's a residential backyard, a resort, or a hotel.

Versatile, **with light features**, its modularity serves various applications. Combined, they are a perfect outdoor retreat. Freestanding, it is a stylish poolside lounge, or a cozy entertainment space. K-BANA™ can be installed almost anywhere — often without a permit depending on the configuration and location.

Our manual louvered roof pergola is way more than a simple cabana; it's a transformative addition to your outdoor lifestyle, suitable for **both residential and commercial settings**.

2 standard sizes: 10' W x 10' L x 8' H - 12' W x 12' L x 8' H

4.5" x 4.5" posts

Integrated Gutter System

Louvers rotate up to 90°

Manual operation with handle







### Configuration

- Free-standing unit
- Multi-zone Layouts
- Optional floor structure

### Architectural Features

- Privacy Walls
- Single-Panel Sliding Doors
- Double-Panel Sliding Doors

### Color Palette

AKZONOBEL – AAMA 2604

- white
- black & white





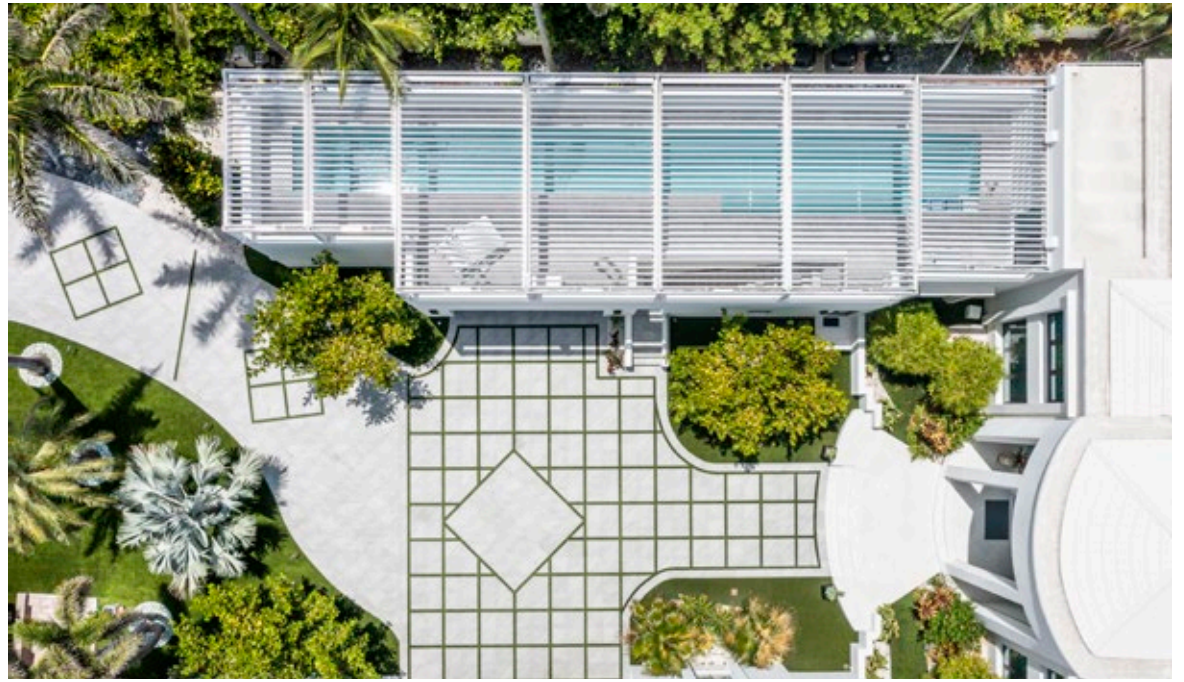
## Imagine your own exclusive outdoor space.

Discover the perfect outdoor solution for your home with our diverse collection of high-end aluminum pergolas. Each product is a custom-made masterpiece designed to fulfill your unique vision of outdoor living. Choose from the modern flexibility of a motorized louvered roof, the timeless comfort of a fixed insulated roof, the charm of a lattice roof or the versatile simplicity of a manual louvered roof.

Azenco Outdoor's line is crafted from durable aluminum, ensuring a lasting investment. Our pergolas stand as architectural highlights, transforming your backyard into a personalized retreat of style and functionality.

Selecting the right pergola means more than just enhancing your outdoor space; it's about creating an enduring focal point for your home. The multiple options provide additional features to face the elements and enhance the architectural appeal of your home. Our aluminum pergolas provide both variety and quality, ensuring your outdoors become an irreplaceable area for yourself, your family and your guests.











## Investment in all-weather outdoor area pays for itself.

Unlock the complete potential of your available space by creating all-weather atmospheres that seamlessly adapt to the weather, ensuring year-round comfort for your guests. Whether your establishment is a country club, restaurant, resort, or hotel, there's an opportunity to transcend the ordinary.

Take the initiative to explore the possibilities of your premises by integrating a dynamic outdoor space that harmonizes effortlessly with your existing design. Expand beyond the confines of indoors to not only enhance your customers' experience but also to welcome a larger clientele.

Delight your customers by designing an outdoor setting that aligns with their desires, creating an immersive experience that lingers in their memories.

This strategic decision not only fosters customer satisfaction but also promises a significant Return on Investment.













# Our Commitments.

At Azenco Outdoor, we are passionate about creating outdoor living spaces that seamlessly blend aesthetics and functionality while **minimizing ecological footprint**. We recognize that there is no such thing as a zero-impact product. That is why we have embraced eco-design, considering each product's lifecycle to **reduce environmental effects while preserving quality**.

In pursuit of eco-friendly practices, we prioritize the selection of durable aluminum for its longevity, contributing to a more sustainable outdoor living experience. Our **smart manufacturing processes** not only ensure precision and efficiency but also significantly reduce waste and energy consumption. Adopting a proactive stance on waste reduction, we have implemented comprehensive recycling programs targeting aluminum scrap and cardboard packaging.

Azenco Outdoor is dedicated to creating sustainable, quality outdoor spaces with a conscious effort to protect the planet.



We are proud to partner with **4ocean**, an ocean cleanup company dedicated to ending the ocean plastic crisis.

As a **Certified Cleanup Partner**, Azenco Outdoor has supported the cleanup of 25,000 pounds of debris from the ocean in Indonesia through the efforts of the 4ocean teams in 2023.

In addition to our support abroad, the entire Azenco Outdoor team rallied together for a hands-on approach to this cause. We participated in a beach cleanup right here in our local community in Boca Raton, FL.

While we understand that this is just a drop in the ocean of global environmental challenges, it's a step in the right direction, and we are continuously seeking new ways to do more.





As the manufacturer of outdoor products, our role extends beyond production to a collaborative partnership with a **dedicated team of local dealers** who handle the installation of every project.

The **AzenCommunity** is an extensive network of local experts spanning the United States, Canada, Caribbean, and Mexico.

These highly skilled professionals, committed to serving a diverse clientele, including homeowners, contractors, architects, and designers, work in tandem with us to ensure the seamless installation of our high-quality outdoor products.

In our commitment to excellence, we prioritize collaboration with qualified installers who share our vision for **complete customer satisfaction**. Each dealer undergoes rigorous multi-annual installation training, accompanied by experienced installation instructors who oversee the construction of our outdoor products at project sites.

With a network of over 150 resellers, our emphasis on **local service** guarantees personalized attention and expertise for our customers.



## Currently envisioning your ideal outdoor space?

It is our duty to turn that dream into a reality. Throughout my 25-year career as an entrepreneur, customers have always fueled my designs with their need for sophisticated, highly functional outdoor shade structures that stand the test of time.

At Azenco Outdoor, no detail is overlooked. We take pride in our meticulous craftsmanship, ensuring that even the smallest elements, such as exposed fasteners, are absent from our products. Every proportion has been carefully examined, and we place equal importance on service as we do on the quality of our products.

The combination of our respective creativity and ambitions has shaped our current identity and will continue to define our future.

Please, continue dreaming of outdoor spaces because, at Azenco Outdoor, we believe that Life is Better Outside!

*Charles Chapus, President*





Life is  
Better  
Outside

(305) 306 - 3204

[azenco@azenco-outdoor.com](mailto:azenco@azenco-outdoor.com)

[azenco-outdoor.com](http://azenco-outdoor.com)